



YOUR MEDIA  
PARTNER

Expertise and solutions  
for film heritage preservation



EQUIPMENT — NEW AND REFURBISHED — SUPPORT

# THE COMPANY

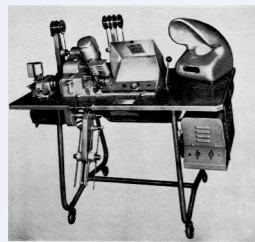
## History

1919



CTM — a French-based company was founded in 1919 as a film laboratory.

1951



CTM as «Compagnie de Travaux Mécaniques» is created to manufacture film equipments as the editing MORITONE becoming a standard.

1984



CTM creates the film cleaning machines ULTRACLEAN with continuous solvent recovery and distillation and ultrasonic action. A word reference.

1989



CTM creates the laser subtitling machine LIGHTNING II to engrave subtitles directly onto the print. More than 75 machines all around the world.

1992



CTM Film took over another French company DEBRIE — a long-established film equipment manufacturer.

1997



CTM opens an integration department to complete film with digital equipment. “CTM Solutions” becomes the French leader for AVID systems.

2000



CTM Film introduces its first telecinema DIXI HARMONY, to transfer 16mm and 35mm to video with color grading integrated.

2015



DEBRIE presents a new product PERFECTA, a digital multiformat viewing and scanning table for old films.

2018



Introduction to the market of the last generation film cleaning machine COMPACT CLEAN especially designed for archives' needs.

2019



Conception of the brand new sprocketless real-time scanner SCANBOX dedicated to 8, 9.5 and 16mm films.

## Film Scanner

# PERENITY 2

Designed especially to treat the archive materials PERENITY perfectly combines the rendering quality, speed of execution and preservation of materials.

### HIGHLIGHTS

- Multi format: 35/S35 - 16/S16 - 8/S8, 28 - 17.5 - 9.5
- 5K (HDR mode - option) / 4K / 2K
- Sprocketless laser detection
- Picture stabilization through the perforation analysis
- High-power cold RGB LED source
- **NEW** : KOLIBRI software:
  - ◊ Video noise reduction
  - ◊ Automatic Scene Detection & Timeline
  - ◊ Automatic White Balance
  - ◊ Automatic Level Control
  - ◊ Autofocus

### ADVANTAGES

- Specially conceived for handling any type of damaged film with a large amount of missing or damaged perforations
- Capstan drive system
- Cleaning by Particle Transfer Rollers - PTR (optional)

### TECHNICAL SPECIFICATIONS

- High resolution lenses
- Ratios: 4:3 - 16:9 - 1.85
- 2, 3, 4 perforations in 35mm
- Ultra low noise camera with Bayer pattern
- Self-adjusting motorized frame size
- Optical sound reader COMMOPT, all format types



### DIMENSIONS

Width: 104 mm  
Depth: 60 mm  
Height: 175 mm  
Net weight: 300 kg

## Scantable

# PERFECTA

PERFECTA is designed to handle positive and negative nitrate films as well as negative, positive and intermediate safety films. It handles warped and damaged film with missing perforations. PERFECTA is equipped with a 5,1K scanning system that allows full-width film scanning.

### HIGHLIGHTS

- Multi format: from 8/S8, 9,5, 16/S16, 17,5, 28, 35/S35mm
- Picture stabilization through the perforation analysis
- Sprocketless capstan drive system with 2D optical pin registration
- Simplified film loading thanks to a very limited number of rollers

### ADVANTAGES

- Horizontal positioning proper to a traditional viewing editing table
- Enhanced ergonomics for film viewing, inspection, physical restoration and editing
- Equipped with a multi-unit counter: images / meters / time.

### TECHNICAL SPECIFICATIONS

- **Camera**: 5,1 K with ultra low noise, progressive mode with Bayer filter, 12-bits
- **Sensor format**: (5.120x3.840 pixels)
- **Output formats**: 5K, 4K, 2K, HD, SD and others
- **DPX Color B/W 10/16 bit** (ANSI / SMPTE 268M-2003)
- **Uncompressed AVI**
- **Low resolution H264**
- **WAV / BMF**
- **Bi-phase output, Genlock input synchronization and basic protocol RS422**
- **Audio output** (2 channels)



### DIMENSIONS

Width: 157 mm  
Depth: 91 mm  
Height: 91 mm  
Net weight: 220 kg



## Small formats Scanner

# SCANBOX

NEW

### TYPES ET FORMATS OF FILMS :

- Negative, internegative, interpositive, positive, C. and B & W
- 16/S16 mm – 9.5 mm – 8/S8 mm

### SCANNING :

- Real-time scanning up to à 50 i/s.
- Low noise camera, progressive mode with Bayer filter
- Resolution 4K (4 096 × 3 000), 2K (2048x1536)
- High resolution lens
- Automatic adjustment of format and focus

### FILM TRANSPORT AND TENSION :

- Capacity 600 meters
- Film is driven by capstan with no sprockets
- Tension regulated by two pressure arms

### LIGHTING :

- Trichrome LED Lightning
- Integration sphere for homogeneous light and the reduction of scratches and dust during scanning

### STABILIZATION OF THE IMAGE:

The perforations are detected by a laser. This allows precise positioning of the image. The absence of a sprocket for the detection avoids any risk of damaging the film. Laser detection can handle any type of film with up to 5% shrinkage.

### PTRS & WETGATE :

- PTR rollers for dirt and dust removal
- Wetgate for scratch reduction (option)

**DIMENSIONS**  
Height: 80 cm  
Length: 65 cm  
Width: 52 cm



## Rejuvenating machine

# CLARA

## TO SOFTEN AND CLEAN THE FILM

CLARA provides an excellent film cleaning and softening solution before scanning

### DIMENSIONS

Length: 4100 mm

Width: 1375 mm

Height: 2447 mm

Net weight: 2000 kg



### HIGHLIGHTS

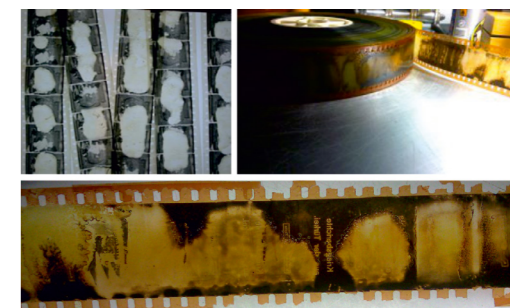
- Gelatine restoration with reduction and removal of scratches
- Efficient polishing
- Moistures treatment by soaking the film in the baths, by the action of brushes and ultrasonic
- Very accurate cleaning of the two faces of the film
- Reduce "Vinegar syndrome" effect

### ADVANTAGES

- Full rejuvenating process
- Fast and efficient drying unit
- Demand-drive
- Integrated pumps
- Ultrasonic cavitation (optional)
- Very compact and simple to install

### TECHNICAL SPECIFICATIONS

- **Film capacity:** 600m (2000 feet)
- **Film formats:** 16/35 mm
- **Film speed:** 0 to 750 m/h
- **Tanks:** 1 PVC monoblock of 4 tanks
- 2 circulation pumps
- **Heat exchanger + filter:** 2
- **Unwinder & winder buffers:** 1min 30s at full speed (750 m/h)
- **Take-off & take-up:** constant tension
- **Power:** 380V, 50Hz, 3phases (P+N+Ground), 15 kW



## Compact Film Cleaner

# COMPACT CLEAN & ECO CLEAN

### TO CLEAN YOUR FRAGILE FILMS

#### HIGHLIGHTS

- Last generation multi format economical and compact model specifically designed for archives and film laboratories
- Effective dirt, grease, fingerprints and other contaminations removal by the immersion cleaning action in the hermetically protected cabinet

#### ADVANTAGES

- Real-time solvent filtering
- Smooth drying by nozzles and solvent vapors recovery by condensation
- Minimized film transport rollers ensuring smooth and gentle tension of the film
- Ergonomic and fully digitized touch screen controller providing with the cleaning settings and detects the end of film

#### TECHNICAL SPECIFICATIONS

- Film capacity: 600 meters
- Film speed: Variable speed
- Multi-formats : 8, 16, 35mm
- Sprocketless/capstanless - drive system
- Controlled by PLC
- Options : distillation and conservation tanks

### HFE



- Speed : 1500 m/h

### PERCHLOROETHYLENE



- Speed : 750 m/h

### WATER + ADDITIVE



- Speed : 500 m/h

DIMENSIONS:  
Height: 135 cm  
Length: 74 cm  
Width: 90 cm

## Film Cleaner

# ULTRACLEAN

### TO CLEAN BEFORE SCANNING

#### DIMENSIONS

Width: 1310 mm

Depth: 740 mm

Height: 1940 mm

Net weight: 625 kg



#### HIGHLIGHTS

- Dual cleaning process with buffers & ultrasonic action
- HFE or Perchloroethylene as cleaning agent
- Continuous solvent recovery & distillation
- Closed loop air drying
- Film drive by capstan
- Control of brushes speed rotation

#### ADVANTAGES

- Low solvent consumption
- Partition between a clean and a dirty reel
- High cleaning speed
- PLC management
- Better comfort for the user
- External conservation tank for HFE storage (optional)

#### TECHNICAL SPECIFICATIONS

Film capacity:

- 4000 feet (1200m)

Formats:

- 16mm / 35mm

Film speed:

- Variable speed

- HFE: 50, 100, 230 feet/max (4200 meters/hour max)

- PERCH: 50, 100 feet/max (2000 meters/hour max)

Power:

- 220 V, 50 Hz, 1 phase, 35 Amp

# A FULL RANGE OF TABLES

## INSPECTION



M10

## REWINDING



RT29

## VIEWING



HDC 352



TR3



EV1800



DUAL HDC 3520

The wide range of horizontal inspection tables corresponds perfectly to the requirements and needs of the operators.

- Horizontal table
- 16/35mm format
- Capacity of 600m
- Manual or electrical (variable speed from 0 to 400 m/min)
- One direction or reverse
- Retractable core
- Light box 275x195mm
- Extractor hood (option)

Comfort for the operator. Well arranged controls. Large choice of options. Simple, accurate and robust.

This range of tables is ideal for handling negative, positive or very delicate archival materials. Mono or bidirectional, manual or electric — these are some of available options to choose from

- Horizontal or vertical tables
- One direction or reverse
- Automatic length control (EV)
- 16/35mm format
- Capacity of 600 — 1200/1800m (EV)
- Constant tension (option)
- Retractable core (RT)

Bidirectional tables, equipped with a clutch and a electromagnetic brake that can be moved by hand.

On the 16/35 tables, changing from 16mm to 35mm film does not require any tools since the 16mm and 35mm picture heads are side by side as well as separate magnetic soundtracks are 16mm, 17.5mm, and 35mm.

Tables in the DUAL Series are equipped with a double screen.

# SECOND HAND EQUIPMENT

TOTALLY REFURBISHED WITH MANUFACTURER'S WARRANTY

## RT27

### MANUAL REWINDING TABLE

- Capacity: 600 m
- Format: 16/35 mm
- Power: 110/220 V - 50/60 Hz - 10 Amp

- AVAILABLE OPTIONS:**
- OP222 - 2 PTR D=76 mm with mountings for film cleaning



## RT28

### ELECTRIC REWINDING TABLE

- Capacity: 600 m
- Format: 16/35 mm
- Power: 110/220 V - 50/60 Hz - 10 Amp

- AVAILABLE OPTIONS:**
- OP222 - 2 PTR D=76 mm with mountings



## M10/11

### MANUAL UNI AND BIDIRECTIONAL INSPECTION TABLE

- Capacity: 600 m
- Format: 16/35 mm
- Speed is controlled by manual handle

- AVAILABLE OPTIONS:**
- OP010 – Working table lamp
  - OP080 – Multi unit counter
  - OP201/202 – Simple/Double shelf etc.



## HDC16/35

### VIEWING AND COMPARISON TABLE

- Capacity: 600 m
- Format: 16/35 mm
- Power: 110/220 V - 50/60 Hz - 10 Amp

- AVAILABLE OPTIONS:**
- OP010 – Working table lamp etc.





125 avenue Louis Roche — 92230 Gennevilliers — France  
+ 33 1 40 85 45 40 | info@ctmgroup.fr | www.ctmgroup.fr



## BECOME OUR LOCAL PARTNER IN YOUR COUNTRY!

### EUROPE

France (Headquarters)

### NORTH AMERICA

USA - CHRISTY'S

### AFRICA / MIDDLE EAST

Iran - TEKALA

### ASIA / PACIFIC

Korea - SAEBYUCKDOOLE CO., LTD  
Malaysia-Singapore-Thailand-Philippines  
Taiwan-China - CINEQUIPMENT  
Australia - LEMAC FILM AND DIGITAL

## OUR CLIENTS: MORE THAN 50 WORLDWIDE ARCHIVES

### EUROPE

BFI(UK)  
Bundesarchivs (Germany)  
INA (France)  
Documentary Archives Kranogorsk (Russia)  
Cinematheque of Belgium (Belgium)  
Immagine Ritrovata (Italia)  
Archiv Republike Slobenije (Slovenia)  
CNC (France)  
Gos TeleRadioFond (Russia)  
National Archives Center (Ukraine)  
Cinemateca Vasca (Spain)  
Swedish Institute (Sweden)

Danish archives (Denemark)  
National Audiovisual Archive Helsinki (Finlande)  
TVP Telewizja Polska S.A. (Poland)  
Turkish Radio and Television Corporation (Turkey)  
Cinemateca Portugues (Portugal)  
Americas Library of Congress (USA)  
George Eastman Museum (USA)  
Cinoteca Nacional (Mexico)  
Canal 7 (Argentina)  
Cinemateca Brasileira (Brazil)  
Fundación Centro Cultural Palacio La Moneda (Chile)

### ASIA / PACIFIC

VFI (Vietnam)  
CFA (China)  
National Films Archives (Azerbaijan)  
National Archives (Kazakhstan)  
Screensound (Australia)  
National Archive of Singapore (Singapore)  
Filem Negara Malaysia (Malaysia)  
Tele Media System CO Japan (Japan)  
Korean Film Archive,  
Asia Culture Institute (South Korea)

### AFRICA / MIDDLE EAST

Egyptian Media Production City (Egypt)  
Centre Cinematographique Marocain (Morocco)  
Soc.Nationale de Radio & Television (Morocco)  
Algerian Ministry of Defense (Algeria)  
The Islamic Republic of Iran Broadcastin (Iran)  
MediaGuru (Qatar)  
National Center for Documentation & Research (Abu Dhabi)  
Gulf Film (Dubai)